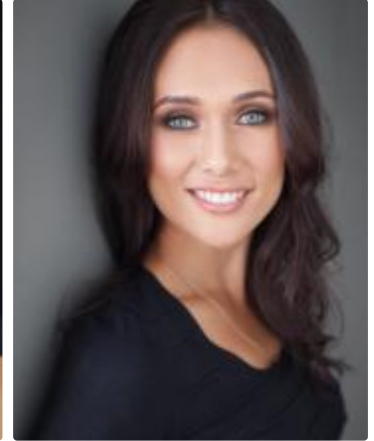
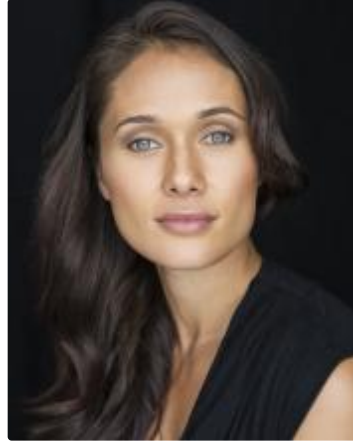


**HEIGHT:** 167cm  
**HAIR:** brown  
**EYES:** green



**BACKGROUND**

Sadelle's history has been sculpted by two passions; a love of sport and the embracing of her culture. Having combined these two passions early in life Sadelle has involved herself in Polynesian dance, personal training and a teacher of Physical Education. Sadelle appeared as Caesar's Wife in the film THE PATRIARCH and has had role on the New Zealand television shows SHORTLAND STREET and FIND ME A MAORI BRIDE. Her accumulating experience ranging from iconic New Zealand productions through to small independent projects has allowed her skills to grow organically and exponentially. Her natural kiwi appeal, love of collaboration and enthusiasm for learning ensures continual growth in the art of performance.

YEAR	PRODUCTION	ROLE	COMPANY/VENUE	DIRECTOR
<b>FILM</b>				
2015	THE PATRIARCH	Caesar's Wife	The Patriarch Ltd	Lee Tamahori
<b>TELEVISION</b>				
2016	SHORTLAND STREET	Anahera Samuels	South Pacific Pictures	Various
2015	FIND ME A MAORI BRIDE	Jacinta	Brown Sugar Apple Grunt	Kiel McNaughton

**TRAINING**

2015 Performance Workshop with Uta Plate  
 2015 - Acting Technique - Raymond Hawthorne  
 2016 - NZ Stunt School - Fight for Camera with Dayna Grant

**RELEVANT SKILLS**

Polynesian dance and Kapa Haka  
 Track & Field, Netball, Body Sculpting, Swimming, Tennis, Waka Ama  
 Te Reo Maori (Intermediate Level)